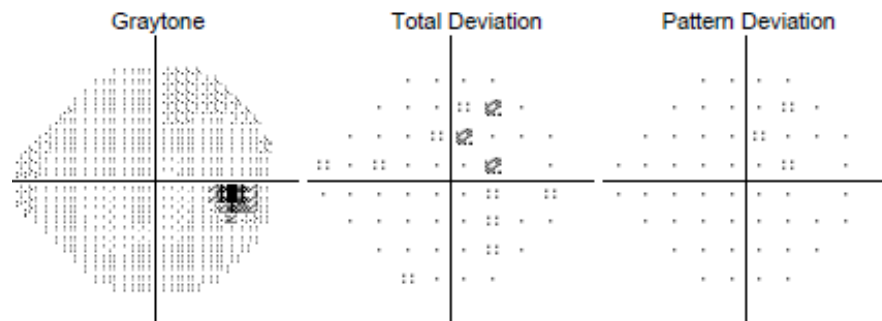


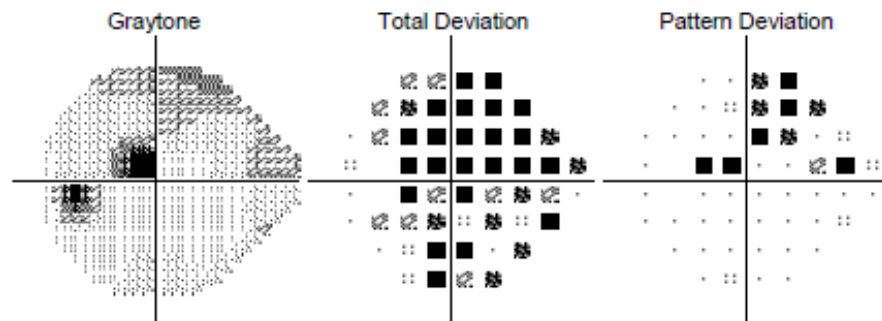
**OD Central 24-2 Threshold Test**

**Structure-Function OU (Single Exam)**

**OS Central 24-2 Threshold Test**



:: P < 5%  
 ☒ P < 2%  
 ☒ P < 1%  
 ■ P < 0.5%



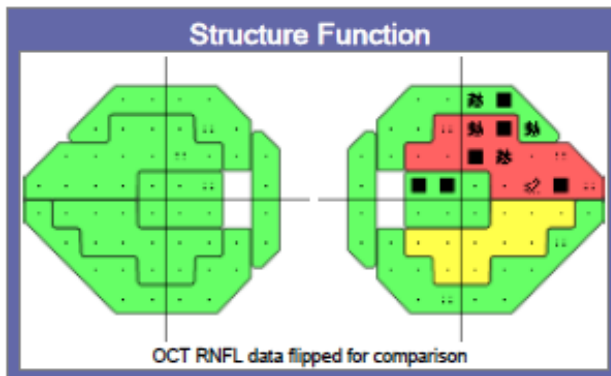
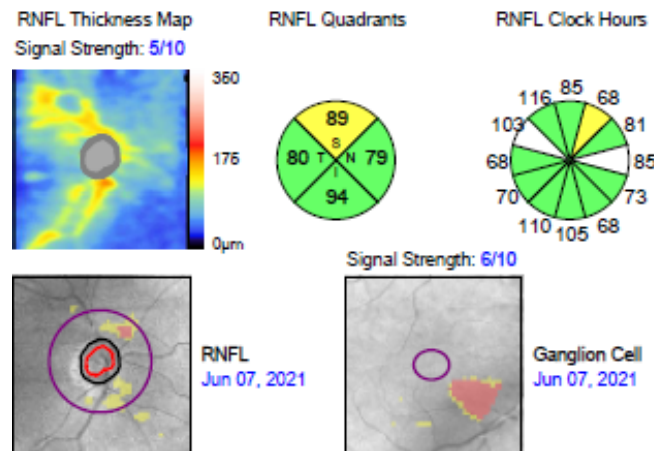
Jan 29, 2021 SITA-Standard

FP: 2%  
 FN: 1%  
 FL: 2/14  
 VFI24-2: 99%  
 MD24-2: -1.92 dB P < 10%  
 PSD24-2: 1.58 dB  
 GHT: Within Normal Limits

Jan 29, 2021 SITA-Standard

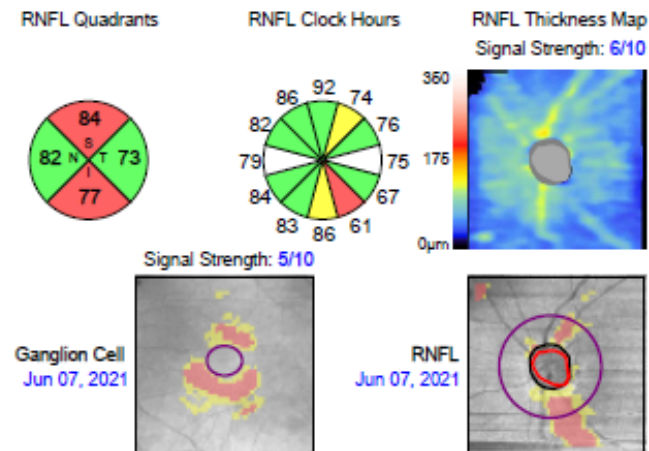
FP: 1%  
 FN: 2%  
 FL: 2/14  
 VFI24-2: 86%  
 MD24-2: -6.73 dB P < 0.5%  
 PSD24-2: 5.58 dB P < 0.5%  
 GHT: Outside Normal Limits

**OD CIRRUS HD-OCT**



OD		OS
86µm	Average RNFL Thickness	79µm
0.66	Average C/D Ratio	0.82
0.87mm²	Rim Area	0.54mm²
0.61	Vertical C/D Ratio	0.75
0.169mm³	Cup Volume	0.459mm³
1.58mm²	Disc Area	1.66mm²
82µm	Average GCL + IPL Thickness	76µm
52µm	Minimum GCL + IPL Thickness	60µm

**OS CIRRUS HD-OCT**



Distribution of Normals: N/A, 95%, 5%, 1%

⚠ At least one parameter is close to a normative limit that may change the color coding on a re-scan